

### GENERAL FEATURES

- 999 Mobile ID Capacity
- FleetSync® or NEXEDGE® Messaging & AVL
- Analog Conventional & LTR® Operation
- NEXEDGE® Conventional & Trunked (Single / Multi-Site) Operation
- Imported JPEG, BMP, GIF, EMF or WMF Image Maps
- Microsoft® MapPoint® 2006/09/10/11/13 North America Maps Compatible
- Google Earth™ Maps (KMF Output)

### GENERAL DISPATCH FEATURES

- Stun / Remote Kill / Emergency / Man-Down
- Text Messages
- 20 Pre-defined Text Message List
- Status Message Request
- Horn Alert
- Lone Worker (FleetSync® & NEXEDGE®)

### ANALOG DISPATCH MESSAGING

- Voice Call (FleetSync®): Individual, Fleet, Group, Broadcast, Supervisor
- 70 (FleetSync®) Custom Status Messages

### NEXEDGE® DIGITAL MESSAGING

- Voice Call (NXDN®): Individual, Group, Broadcast
- 207 Custom Status Messages
- Remote Monitor & Remote Re-Grouping

### NEXEDGE® IP NETWORK OPERATION

- AVL & Dispatch Operation Over IP
- Trunked IP Operation¹
- Conventional IP Operation²
- Digital Voice Systems, Inc. USB-3000™ AMBE+2™ (Required)
- 100 Group Scan with 4 Priority Monitor ID's
- NXDN® Voice Scrambling

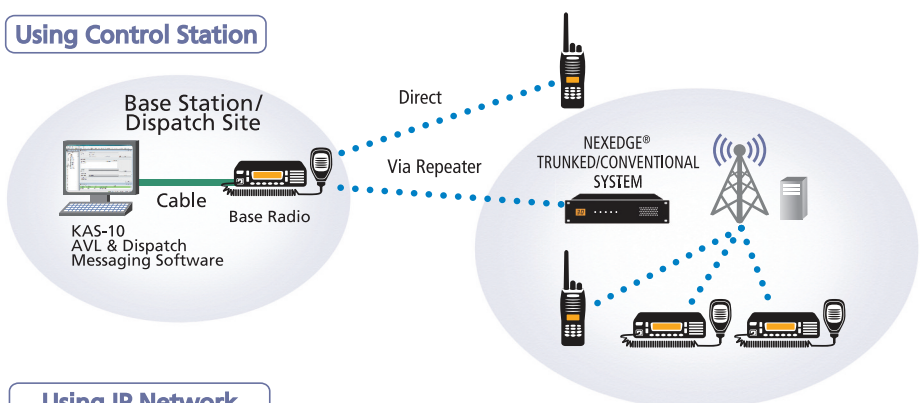
### OPERATORS GRAPHICAL INTERFACE

- Independent Dispatch & AVL Screens
- Integrated Call Operation Windows
- 20 Vehicle, 30 Status & Emergency Icons
- Mobile Icon Tags (name, unit, status message, time, speed, GPS status)
- Emergency Panel Alerts
- View & Track Selected or All Vehicles
- Alphanumeric Text Message Send/Receive Display
- Send Voice Call
- PTT Momentary / Lock Control
- Send Position Request
- Find Location Feature (address, place/data, LAT & LONG)

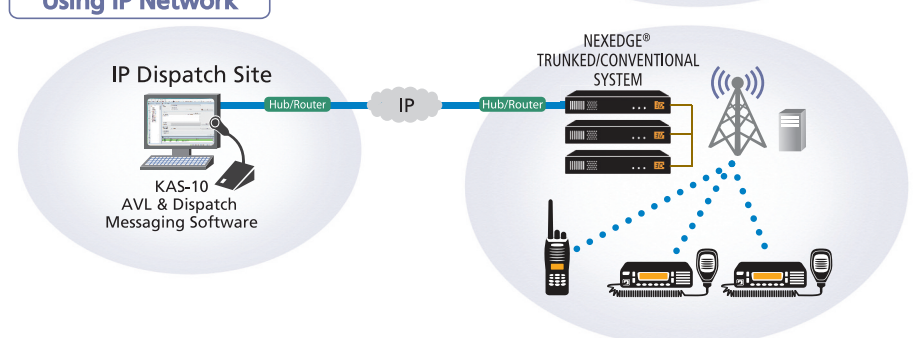
### ADMINISTRATIVE ASSISTANT

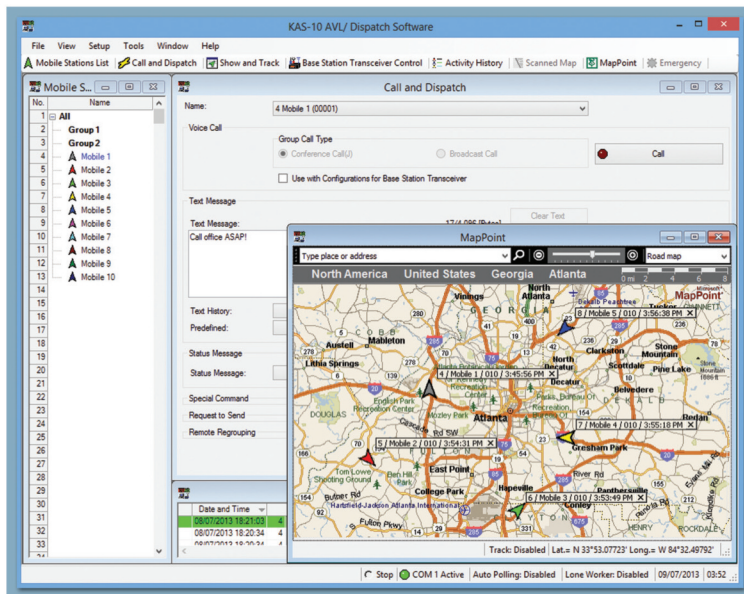
- Administrator Password Protection Setup
- Auto Polling / Auto Reporting
- Speed Restrictions Warning
- Geofence – Alert System for Area Management
- Historical Logging & File Playback
- Emergency & Man-Down Log File Review
- WAV File Import for Warning and New Messages
- In Coming / Out Going Voice Record & Play
- Sent Message Queue

#### Using Control Station



#### Using IP Network





## BASE/CONTROL STATION REQUIREMENTS

- Compatible Kenwood radio with FleetSync® or NEXEDGE® Signalling & Messaging
- PC Serial Interface Cable\*
- Optional KMC-9B/9C Desktop Base Microphone for mobile radio

## FLEET RADIO REQUIREMENTS

- Compatible Kenwood mobile or portable radios
- Internal or external GPS with Antenna\* (Mobile)
- GPS Speaker Microphone\* (Portable)

## PC SOFTWARE/HARDWARE REQUIREMENTS

- Microsoft® Windows® XP / Windows Vista® / Windows® 7 (32/64 bit) Windows® 8 (32/64 bit) Operating System
- Intel® Pentium® III 1GHz (minimum) / Intel® Pentium® 4 2GHz or higher (recommended), Intel® Pentium® 4 3GHz or higher (required for IP Network Operation)
- 256MB (minimum) or 512MB and more (recommended) memory, 100MB HDD free space, CD-ROM, DVD-ROM, Serial Port, XGA (1024 x 768)
- Digital Voice Systems, Inc USB-3000™ AMBE+2™ Vocoder\* for IP Network Operation
- External PC Microphone\* and Speaker\* required for IP Network Operation
- Microsoft® MapPoint® 2006 / 2009 / 2010 / 2011 / 2013 Software\* or Imported Maps

\*Purchase separately

FleetSync® is a registered trademark of JVCENWOOD Corporation.

NEXEDGE® is a registered trademark of JVCENWOOD Corporation.

NXDN® is a registered trademark of JVCENWOOD Corporation and Icom Inc.

LTR® is a registered trademark of Transcript International.

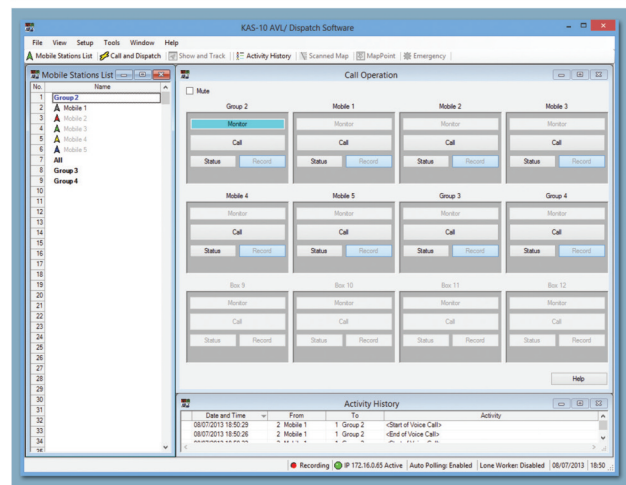
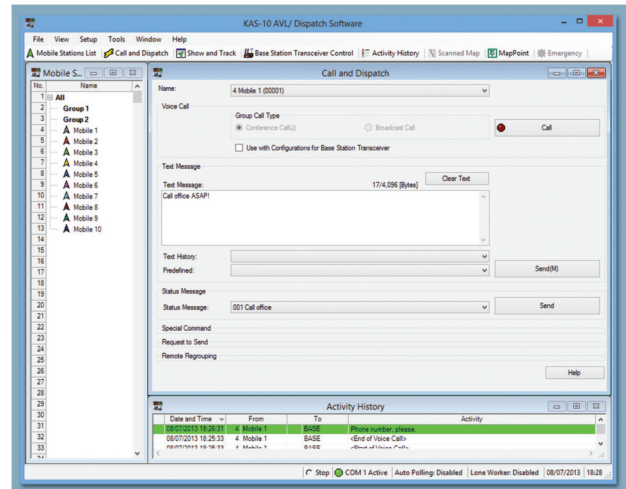
Microsoft®, Windows®, Windows Vista® and MapPoint® are trademarks of Microsoft Corporation in the U.S. and other countries.

Intel® and Pentium® are trademarks of Intel Corporation in the U.S. and other countries.

USB-3000™ and AMBE+2™ are trademarks of Digital Voice Systems, Inc.

Google Earth™ is a trademark of Google Inc.

Note: Downloading, installation or using Google Earth software or using service is subject to Google Inc. Terms of Service, Legal Notices and Additional Terms.



Specifications are subject to change without notice, due to advancements in technology

footnotes from Front:

<sup>1</sup> Trunked IP Operation:

Up to 10 KAS-10 per Trunked Site

Up to 100 KAS-10 per Trunked Network.

<sup>2</sup> Conventional IP Operation:

Up to 10 KAS-10 per NXR-700/800/900/901 repeaters (required firmware Ver4.0 or later)

Up to 2 KAS-10 per NXR-710/810 (with KTI-3) repeaters (required firmware Ver2.0 or later)

# KENWOOD

**Kenwood U.S.A. Corporation**  
 Communications Sector Headquarters  
 3970 Johns Creek Court, Suite 100, Suwanee, GA 30024-1265  
**Order Administration/Distribution**  
 P.O. BOX 22745, 2201 East Dominguez St., Long Beach, CA 90801-5745

**Kenwood Electronics Canada Inc.**  
 Canadian Headquarters and Distribution  
 6070 Kestrel Road, Mississauga, Ontario, Canada L5T 1S8  
 www.kenwood.ca

  
 www.kenwood.com



ISO9001 Registered  
 Professional Systems Business Group  
 JVCENWOOD Corporation

ASD#24013 Printed in USA